

Gratings

Profile gratings

Staircases

Steel processing

**Gebr. Meiser GmbH**

Schmelzer Straße

D-66839 Schmelz-Limbach

**Phone** +49 (0) 68 87/3 09-0

**Fax** +49 (0) 68 87/3 09-31 31

**Meiser Gitterroste KG**

Am Lehnteich 3

D-08606 Oelsnitz

**Phone** +49 (0) 3 74 21/50-0

**Fax** +49 (0) 3 74 21/50-120

**Meiser Vertriebsbüro Essen GmbH**

Hafenstraße 280

D-45356 Essen

**Phone** +49 (0) 2 01/83 38-0

**Fax** +49 (0) 2 01/83 38-146

**e-Mail** [info@meiser.de](mailto:info@meiser.de) . **Internet** [www.meiser.de](http://www.meiser.de)

**MEISER**<sup>®</sup>

[Reference]:  
*information, recommendation*



**[Technique]:**

*the sum of all measures, equipment and procedures allowing to transform scientific findings into practical value.*

For MEISER, technique goes further and also implies our concern for details, the pleasure we take in quality products and the persistent desire to make things even better.

MEISER produces gratings from stainless steel, zinc coated steel or aluminium. What we strive for is a long-lasting and rugged quality product on the hand, as well as a creative and aesthetic quality design on the other.

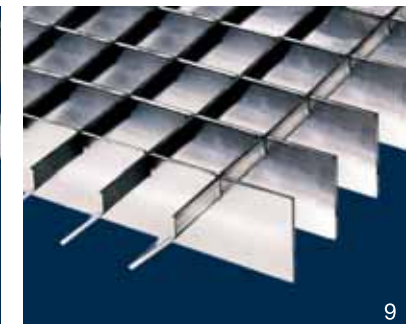
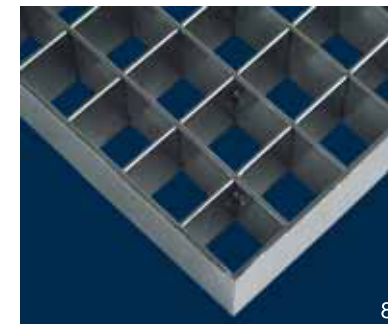
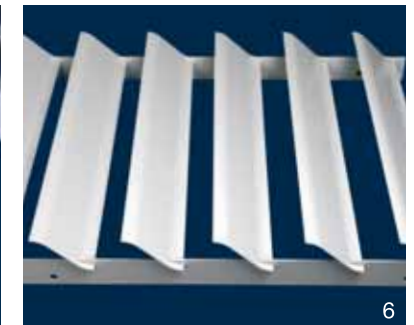
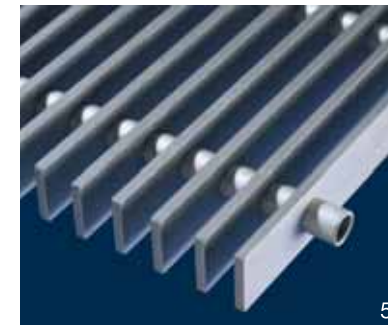
But most of all, we are concerned about our customers' satisfaction.

**MEISER Shelf gratings** 1  
Various models allow for 2  
limitless uses, e. g. for sun shields. 3  
A number of different bars offer 4  
countless fields of application.

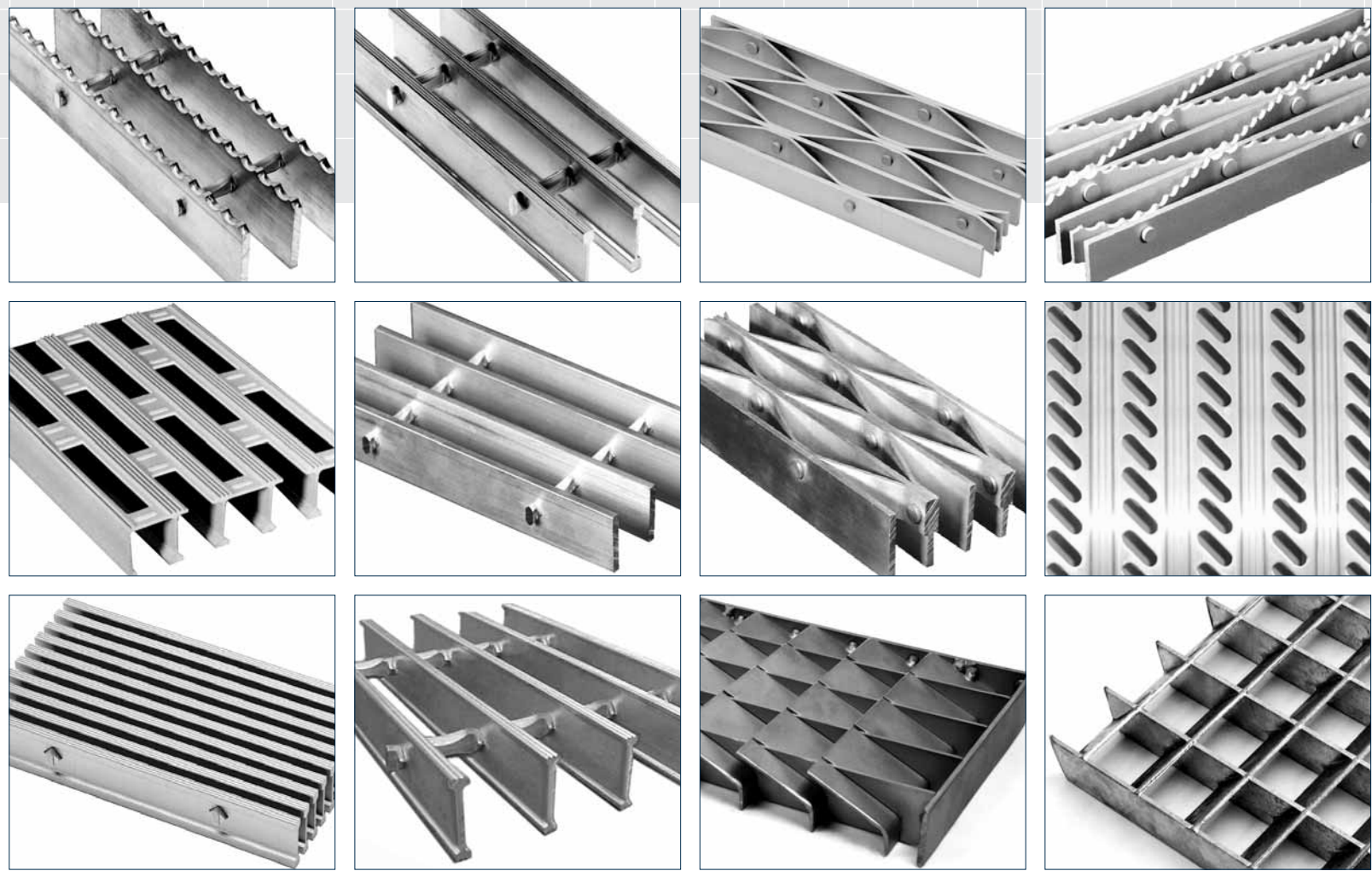
**MEISER Finned gratings** 5  
The direction of the single cross 6  
bars (longitudinal bars) determines 7  
the optics of these finned gratings  
and produces a streamlined alignment  
effect of the mesh, e. g. parallel to  
the building's façade.

**MEISER Full gratings** 8  
Full gratings are very frequently  
used for building exteriors. Made of  
aluminium, their dead weight is very  
low and thus they are a good alternative  
to current building exteriors.  
With powder-coatings and surface  
treatments we can create interesting  
surface textures that offer changing  
impressions when looking from  
different angles or when light  
conditions vary.

**MEISER Louvre gratings** 9  
Their characteristic element are the  
bevelled cross bars whose distance  
and angle can be chosen almost as  
desired. Thus, they are perfect for  
hindering others from peering through  
and they protect from humidity or  
sunlight, and in housing construction  
they are an interesting alternative to  
concrete balconies.



MEISER Special shapes:



**[Grating]:**

*the art of constructing  
a solid surface from  
almost nothing.*



Suspended ceiling 1  
Technical college  
Stuttgart/Germany

1



2

2 Ceilinglining  
Airport Stuttgart/Germany



**[Aesthetics]:**

1. science, tenet of laws about harmony in art and nature.
2. stylish beauty.



Ceilinglining 1  
Aluminium full gratings  
Airport Stuttgart/Germany



2 Suspended ceiling  
in stainless steel pickled  
press locked gratings  
Sony Center Berlin/Germany

3 Suspended ceiling  
made with gratings  
Fairground Zurich/Switzerland



**[Function]:**

<< *performance, worth* >>  
*[clearly defined] task*  
*within a context.*



Hot-dip galvanized 1  
press locked gratings  
Façade of a  
multi-storey car park  
Ulm/Germany



Galvanized press 2  
locked gratings  
Building exterior  
Schärpfen/Germany



3 Façade of a multi-storey car park Berlin/Germany

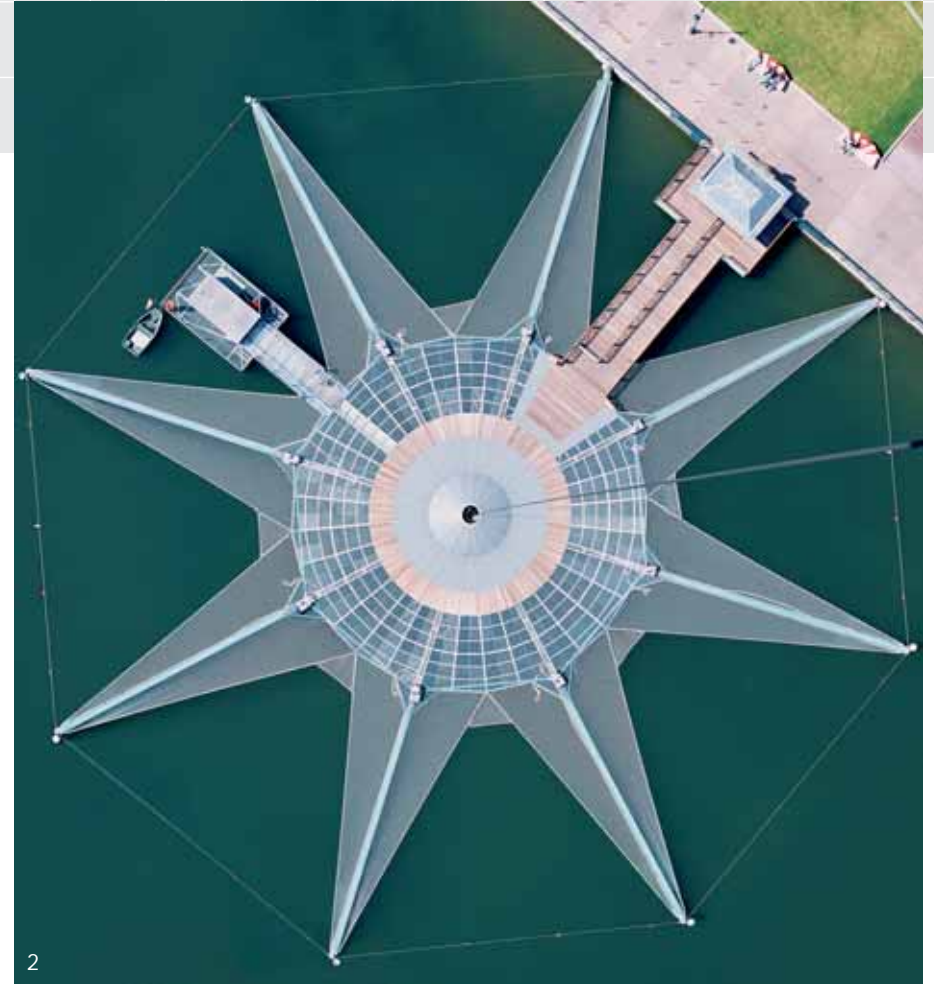
**[Complexity]:**

1. *sum of all characteristics and possibilities.*
2. *complexity.*



Building exterior 1  
New Zealand

Press locked gratings 2  
used as floor elements  
Paris/France





3 Galvanized press locked gratings for building exteriors  
Allianz Arena  
Munich/Germany

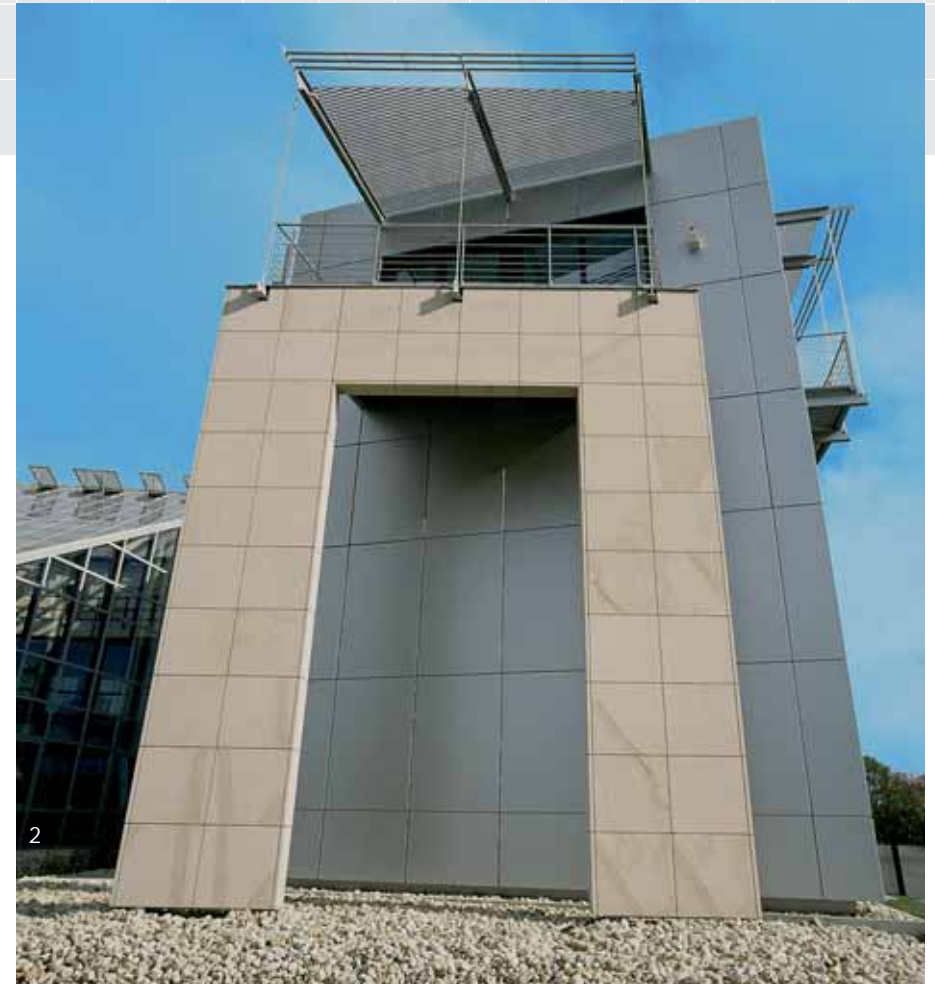
**[Material]:**

*raw material, basic material,  
physical products of any kind  
used for producing  
a certain work.*



Sun shields 1  
University hospital  
Halle/Germany

Sun shield coverings 2  
MEISER administration offices  
Oelsnitz/Germany





3 Sun shield coverings  
DG Publisher  
Wiesbaden/Germany



**[Competence]:**

*integrated sum of all capacities and capabilities with reference to certain demands.*

Sun shield 1  
New building of the  
regional state insurance office  
Augsburg/Germany

Sun shield 2  
Centro Vital  
Berlin/Germany





3 Sun shield coverings  
Radisson Hotel  
Cologne/Germany



4 Sun shields  
University hospital  
Halle/Germany